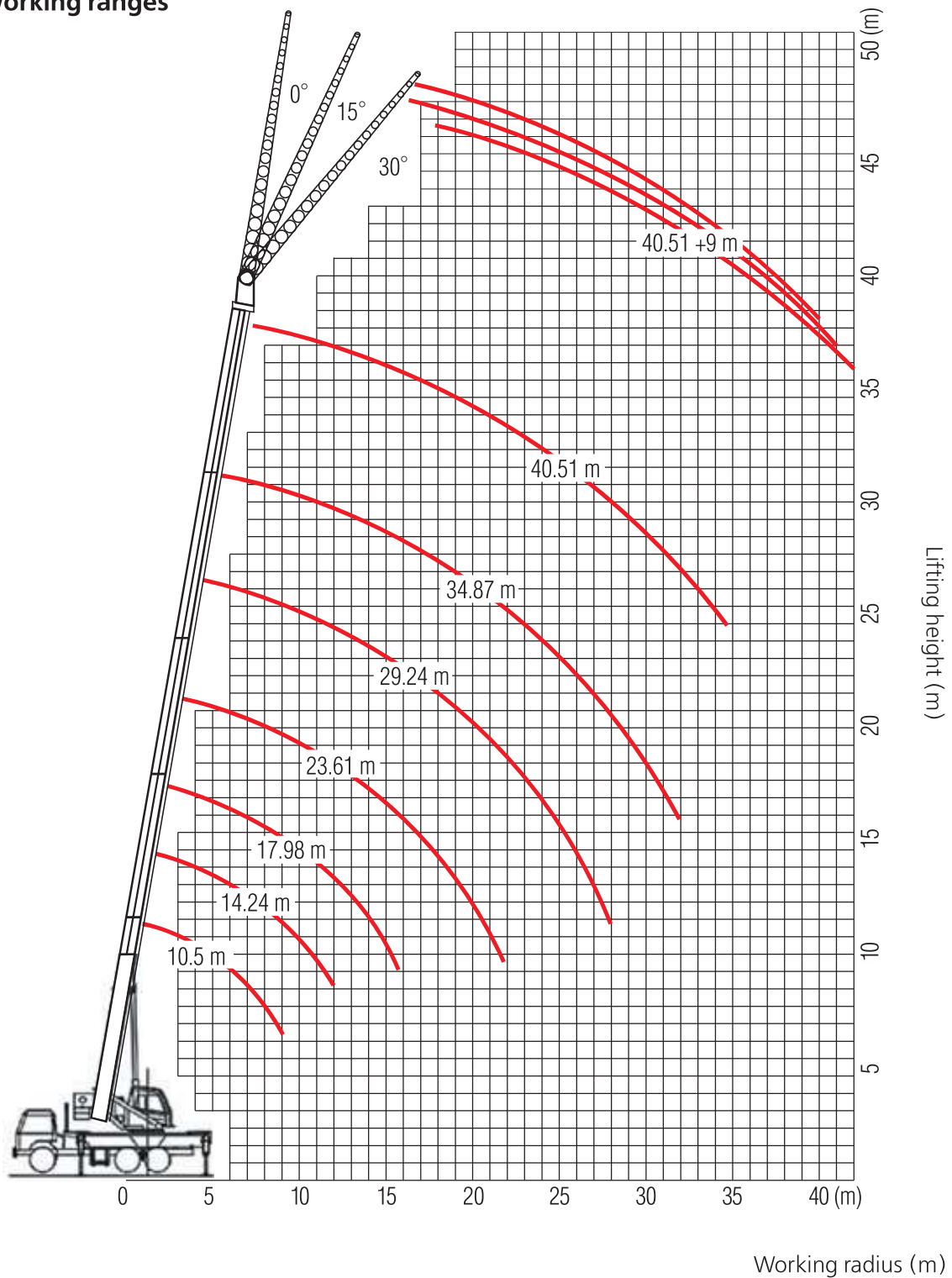


- ▷ Max. lifting capacity 40 t
- ▷ Max. lifting moment 140.0 tm
- ▷ 4-section telescopic boom 10.5 – 40.5 m

Crane Superstructure

Lifting capacity		40 t
Min. rated range		3 m
Tail slewing radius of swingtable		3980 mm
Boom section		4
Boom shape		U-shape
Max. lifting moment	Base boom	140.0 tm
Boom length	Base boom	10.5 m
	Full-extend boom	40.51 m
	Full-extend boom+jib	49.51 m
Outrigger span (Longitudinal×Lateral)		7200 X 7200 mm
Jib offset		0° 15° 30°
Max. single rope lifting speed of main winch (no load)		110 m/min
Full extension/retraction time of boom		135/110 s
Full lifting/descending time of boom		70/80 s
Slewing speed		2.0 r/min
High Voltage Detector		included

Working ranges


Radius, m	Boom length, m						
	10.5 m	14.24 m	17.98 m	23.61 m	29.24 m	34.87 m	40.51 m
3	40000	33000					
3.5	36000	33000	22000				
4	33000	30000	22000				
4.5	31000	28000	22000	17600			
5	28000	25000	22000	17200			
5.5	25000	23000	20500	16300	13500		
6	22000	21000	19000	16000	13000		
6.5	20000	19000	18000	15000	12500		
7	18000	17500	17000	14500	12000	11000	
7.5	16500	16000	15500	13500	11500	10500	
8	15000	15000	14500	12500	11000	10000	
9		12500	12000	11500	10000	9000	7500
10		11000	10500	10000	9500	8000	7000
11		9000	8700	8800	8700	7500	6500
12		8000	7700	8000	7600	6500	6000
14			5700	6400	6300	6200	5500
16			3500	5000	5000	5000	5000
18				3900	4200	4200	4200
20				3100	3400	3400	3400
22					2800	2900	2900
24					2200	2300	2400
26					1700	1900	2000
28						1600	1700
30						1250	1400
32						1000	1100
34							900
parts of line	8	6	5	4	3	3	3